

KEVIN O'NEILL

Handshake Software SharePoint 2007 PageGuru In-Place Upgrade

The following document describes what was done to set-up Handshake Page Guru 3.2 as an in-place upgrade on a SharePoint 2007 farm:

General Install

The proper zip file HS32UpgradeDec2010.zip was downloaded from the Handshake Software ftp site and placed in D:\Install\Handshake

The file vcredist_x86.exe which is a Microsoft Visual C++ 2005 Service Pack 1 Redistributable Package ATL Security Update was downloaded from Microsoft and placed in D:\Install\Handshake

<http://www.microsoft.com/downloads/en/details.aspx?familyid=766a6af7-ec73-40ff-b072-9112bab119c2&displaylang=en>



The screenshot shows the Microsoft Download Center interface. At the top, there is a navigation bar with links for Downloads A-Z, Product Families, Download Categories, Buy Now, and Help. Below this is a search bar with the text "Search All Download Center" and a Bing logo. The main content area features the title "Microsoft Visual C++ 2005 Service Pack 1 Redistributable Package ATL Security Update" in a large, bold font. To the right of the title is a "Microsoft Update" icon with the text "Scan your computer for Windows and Office updates that you need". Below the title is a "Brief Description" section with a warning icon and the text: "A security issue has been identified that could allow an attacker to compromise your Windows-based system with Microsoft Visual C++ 2005 Service Pack 1 Redistributable Package." To the right of the description is an "On this page" section with a list of links: "Quick Details", "Overview", "System Requirements", "Instructions", and "Additional Information". At the bottom right of the page is the Microsoft Visual Studio logo.

The file vcredist_x86.exe was run and all defaults were taken

All the log files were deleted from D:\Program Files\Handshake\Logs

The D:\Program Files\Handshake folder was copied to

D:\Program Files\Copy of Handshake_2011

The file HS32UpgradeDec2010.zip was unzipped and the exe called Handshake_v32_Setup.exe was run located in:

D:\Install\Handshake\HS32UpgradeDec2010

WEBSITE: [HTTP://WWW.KMO.NAME](http://www.kmo.name)
E-MAIL: ONEILLWEBSITE@VERIZON.NET
USE ALL COMMANDS AT OWN RISK

KEVIN O'NEILL

At the first screen Update was selected – then Next

Browsed to D:\Install\Handshake and selected HS32UpgradeNew.xml and clicked Next

Selected destination folder of D:\Program Files\Handshake

Selected all folders

Clicked Install

Clicked Finish

Clicked Upgrade/Install and switched package to HS32UpgradeNew.xml

Name: Handshake

Description Development

SQL Server mysqlserver name

Password Handshakerules

Database Handshake

Clicked Next

Clicked Next at Choose Component Setup

At SharePoint mirror unchecked install (Note SharePoint Mirror is for dynamic views which were in a transition state)

Clicked Next

At User Mapping Schema screen – selected Handshake User Mapping Classes

Under Visual Content Designer changed to last development item and took out domain name.com

Clicked Next

At Handshake Web Services Tracing left all defaults and clicked Next

Changed Linked Style Sheet at next screen to StandardStyle.css

The default lookup of internal was kept

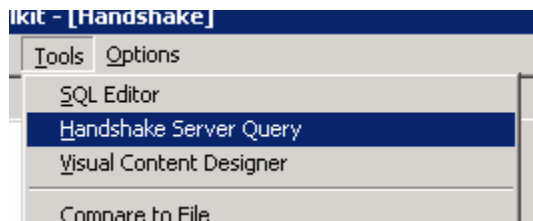
Clicked Next

KEVIN O'NEILL

At the primary SharePoint Server entered <http://mysharepointserver:8000> clicked Next

At the DM Director clicked Cancel

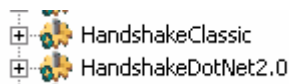
In the Handshake Toolkit on the server selected Tools -> Handshake Server Query:



When prompted entered admin without a password

X'd out of window

Went to inetmgr and recycled the following two app pools:



Note: In the templates the XML skins are going to have to be changed as there is a bug that any items that use align attributes need to be changed to align="r" or align="l"

Next , the System.Linq Line in InitalizeHandshake.cs needed deleted – this file is located in D:\Program Files\Handshake\IIS\App_Code

The List Guru was set-up and all defaults were taken expect for the install drive directory which was changed to d:\ - the .msi is located in:

D:\Program
Files\Handshake\SharepointServerComponents\HSListGuru\HSListGuruSetup-x86.msi

KEVIN O'NEILL

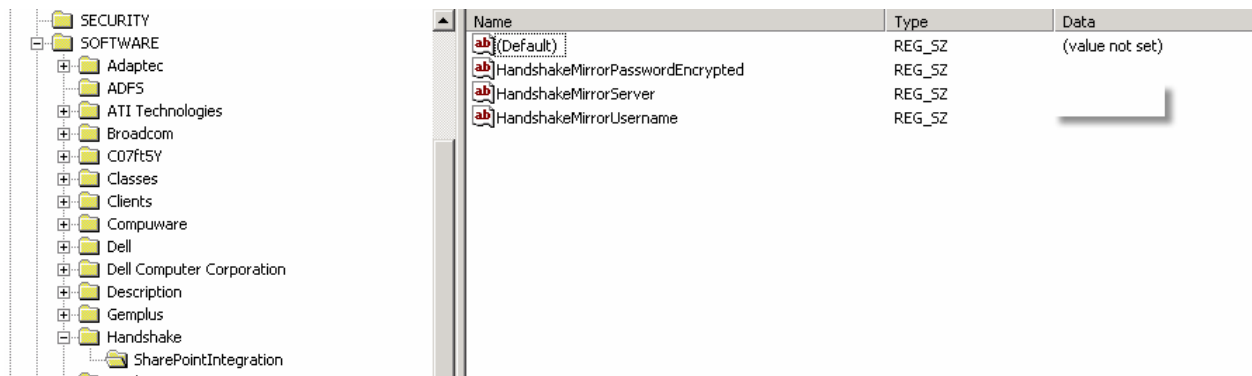
In the Handshake database -> Edited the VisualContentDesigner field and took out the word Visual and changed it to HandshakeWebServices:

In IIS in the HandshakeWebServices – added two MIME types:

.xaml -> application/xaml+xml

.xap -> application/x-silverlight-app

Created the following key in regedit on the Sharepoint WFE:

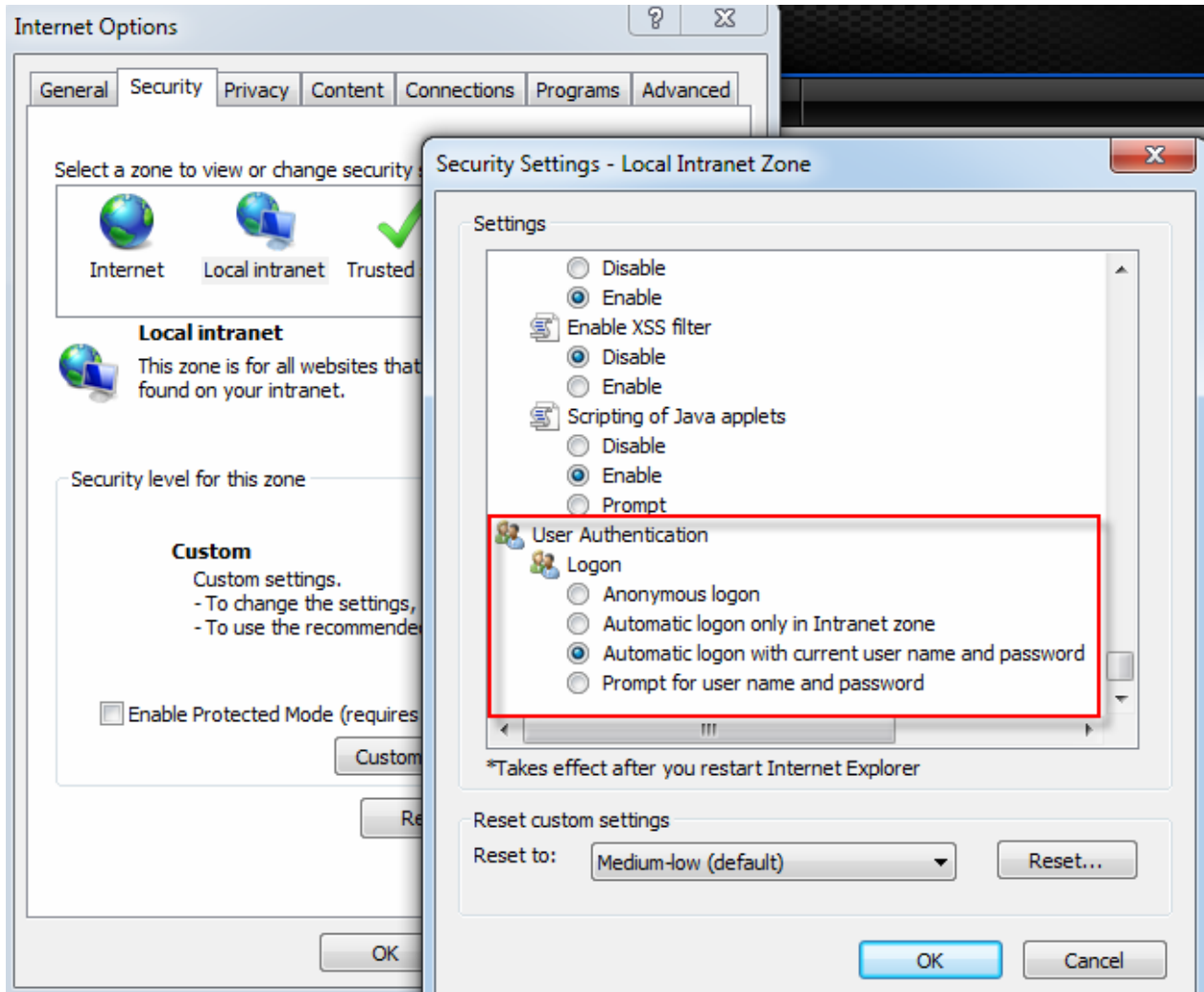


Drag and dropped to Sharepoint WFE in the GAC (c:\windows\assembly) -> D:\Program Files\handshake\Sharepoint Server Components\HandshakeWebPart\2007 -> HandshakeWebParts.dll

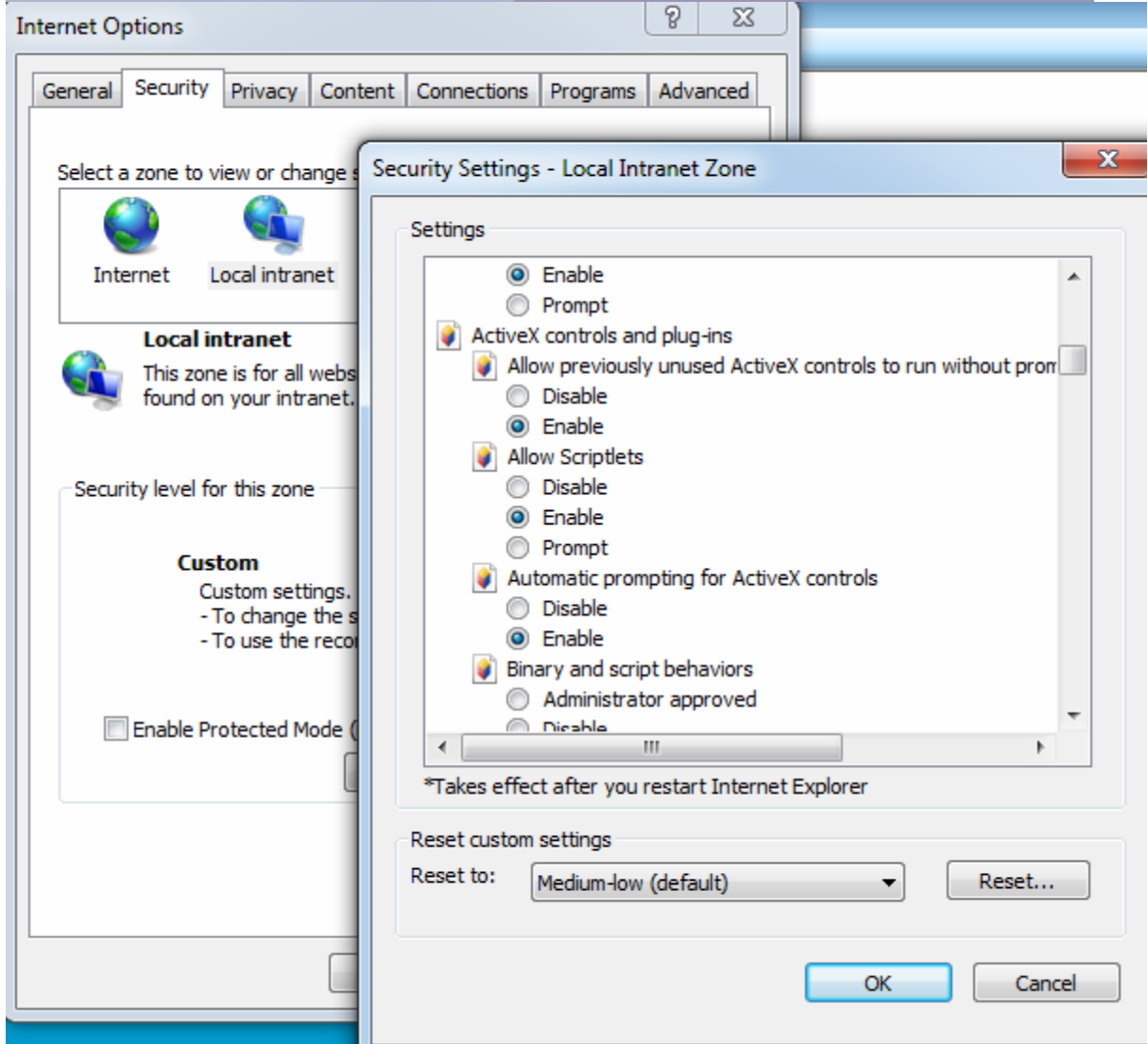
Recycled WFE app pools

KEVIN O'NEILL

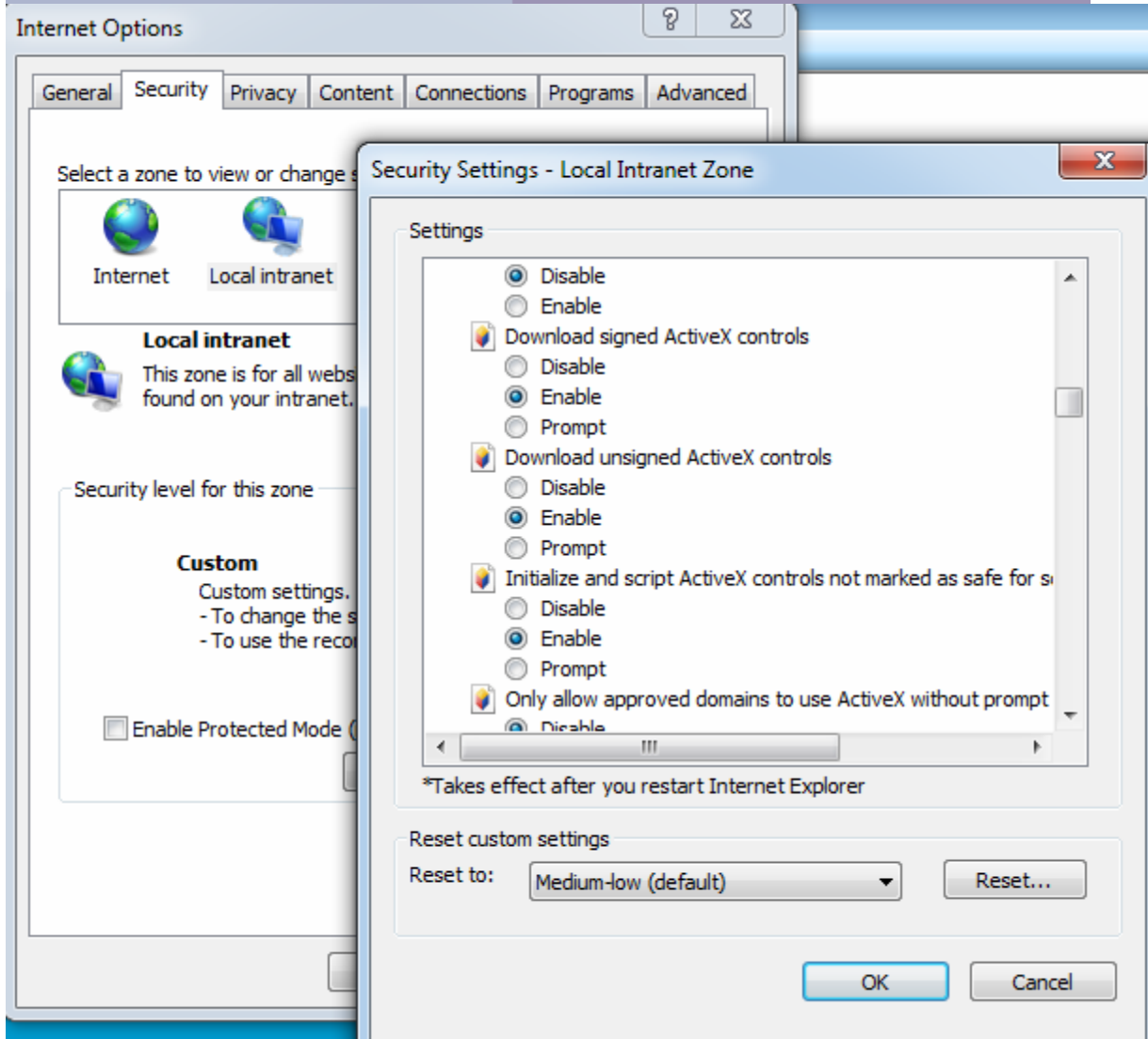
Made sure local IE settings were as follows:



KEVIN O'NEILL



KEVIN O'NEILL



Accessed

<http://servername:port/HandshakeWebServices/ContentDesigner/SkinEditor.aspx>

Ran stsadm as farm admin on Sharepoint WFE from Hive:

Stsadm -o installfeature -filename hslistguru\feature.xml

From Sharepoint site -> turned on new feature – HandshakeListGuru – via Custom Actions

Accessed Sharepoint website as desired.